



## Commodore's Report

Gary Sheneman

The beginning of the year has been extremely busy for your Board. We've received approval of our 2008 operating budget, confirmed our social and cruise calendar, completed the transition to a new accounting system, and begun the work of creating the roster for the coming year. We've also decided to renew an old feature beginning with this edition of the Sound Waves by recognizing our volunteers and committee chairs throughout the year. As with any organization we are highly dependent upon your time and energy and we don't want your efforts to go unnoticed. To begin with, I want to thank all of you who have accepted an Appointed Position. Each of you agreed to manage a critical aspect of the club's business and I'm truly grateful for your help and support. Later in this edition you find others recognized for their efforts in January to support key activities and social events.

In order to keep all of you well informed and connected it's important that each of you review and update your personal profile information on the website or via email. It's also an important part of our preparations for the Roster so if you haven't reviewed your information or you know something has changed please let us know.

It's not too early to start thinking about Opening Day. I'm super pleased to have **Patrick** and **Bridgette Baker** as my Opening Day chairs this year. I expect they will create an extremely memorable weekend and kick-off to the 2008 boating season. If you are interested in learning more about Opening Day plan on attending our February Members Meeting as we will be joined by the Trio from Seattle Yacht Club. In addition to sharing this year's theme they'll be on hand to answer any questions you might have.

February brings the traditional Valentine's dinner hosted by the men of PSYC – don't miss the opportunity to see some real pros in action. We also have our annual Ice Breaker Cruise to Edmonds - I know Donna and I are looking forward to the first cruise of the year and the chance to enjoy some time on the docks with all of you.

Take Care and See You Soon

### February Calendar

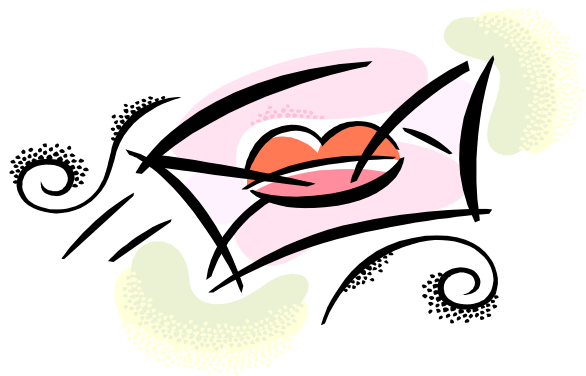
2/13 Board Meeting  
 2/14 Thursday Lunch Bunch  
 2/20 General Meeting  
 2/22—2/24 Ice Breaker  
 Cruise to Edmonds

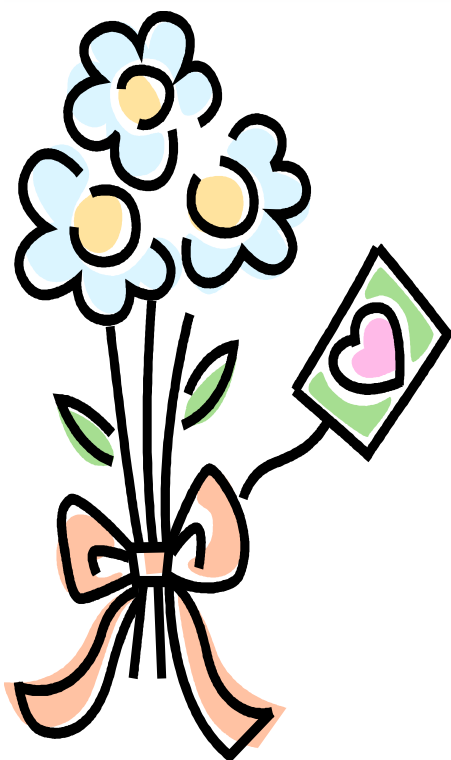
### March Calendar

3/12 Board Meeting  
 3/13 Thursday Lunch Bunch  
 3/14—3/16 St. Paddy's  
 Cruise to Port Orchard  
 3/19 General Meeting

### February Birthdays

2/1 Dana Underwood  
 2/5 Angie Pihlman  
 2/12 Chris Thomsen  
 2/14 Pat Hansen  
 2/14 Jerry Zitkovich  
 2/22 Dan Gray  
 2/24 Norm Grossman  
 2/25 Bess Bell  
 2/27 Juanita Spong





## PUGET SOUND YACHT CLUB

Phone:		206-634-3733
Web Site:	<a href="http://www.pugetsoundyc.org">www.pugetsoundyc.org</a>	
Commodore:	Gary Sheneman	425-802-2322
Vice Commodore:	Kevin Haistings	206-799-4049
Rear Commodore:	Paula Spina	206-265-0981
Fleet Captain:	Chris Kullmann	425-503-3374
Secretary:	Joyce Carlson	206-783-0805
Treasurer:	Bob Quick	425-644-9008
Dockmaster:	Bill DiIs	206-605-3457
Facilities Manager:	Kevin Haistings	206-799-4049
Membership Chair:	Judy Quick	425-466-7906
Sunshine Reporter:	Cindy Josephson	425-827-6628
Galley Chair(s):	Laurence Krueger/Marcia Ellingson	360-651-2838
Website Manager(s):	Jim Barrett/Brian Barrett <a href="mailto:jbarrett@pugetsoundyc.org">jbarrett@pugetsoundyc.org</a>	425-347-4633
Sound Waves Editor:	Susie Barrett	425-338-2291



## Vice Commodore's Report

### Kevin Haistings

Well there's only a few more days left before the Boat show ends, so I'm going to make this a quick. I've got a few more things I want to see at the show.

Last month I mentioned we were looking for new stoves for the galley. I've got some good news and some not so good news. The good news is the stoves have been purchased and are on their way. The bad news is they are coming from the factory (some where in Kansas). They are scheduled to arrive around the end of February. We've waited a couple of years already so one or two months should fly by. Besides February is traditionally the month the men cook dinner for the membership meeting, it may be better if we wait till March to install the new stoves, why risk damaging them right away....

Next on the agenda is to prepare a list for the April work party. If you've noticed something that needs repair or replacement let me know. And speaking of repairs, the ice machine is fixed, fortunately it was a simple (that means inexpensive) fix. So if you need some ice and are by the club, help yourself. The ice maker will put out about 500 to 600 pounds of ice a day. The ice is a small benefit of membership.

Finally speaking of ICE, February is the "Ice Breaker" cruise. See y'all in Edmonds.

## Thursday Lunch Bunch

Every 2nd Thursday of the month (except July & August). We gather at 11:30 and eat at noon. Please join us. Just bring a dish to share. For information, please call Marilyn Sullivan or Lorraine Brooks.

### Valentine's Day Trivia

About 1 billion Valentine's Day cards are exchanged each year. That's the largest seasonal card-sending occasion of the year, next to Christmas.



## Rear Commodore's Report

Paula Spina

Two down, many more to go. Our very first social event of the year, the Wine Tasting, was a smashing success. **Judy Quick** reports that 32 members attended and were entertained by Sommelier Joseph and his selection of inexpensive but fine wines. It was such a fun time nobody wanted to leave when it was over. **Bob Quick** had to start putting tables and chairs away to finally send folks home. It looks as though this event has secured its place on the Club's annual social calendar. Judy asked me to thank **Dana Underwood** and **Veronika Loistl** for their great help during the event.

Talk about a great turnout, what a wonderful turnout we had for the Boat Show Brunch as well. Sixteen members of the Richland Yacht Club joined us for a wonderful start to our boat show weekend. A total of 45 hearty souls braved the cold and early start and were well rewarded with a veritable feast of breakfast delights. I personally want to thank the following members for all of their help in the kitchen: **Eileen & Rick Edel**; **Judy & Bob Quick**; **Sue & Bill Dils** (Sue washed most of the dishes); **Donna & Gary Sheneman**; **Lisa & Mike Haistings** (Donna & Lisa made waffles with strawberries, blueberries and whipped cream); **Kathy & Joe Ornelas** (Kathy, our resident baking goddess, brought homemade muffins and coffeecake); **Rochelle Gray**; **Jodie Paine**; **Echo Summers**; and, of course, my sig-O **Lance Loomis**. I also want to thank our friends at Water's Edge, who ended their meeting early and helped us set up for the brunch.

And now a reminder, in addition to hosting representatives from the Seattle Yacht Club to talk about this year's Opening Day festivities, February's general meeting will focus on new (and, in some cases, old) member orientation. We have a lot of committees and organize a lot of activities in our club. Everything we do as a Club—is done

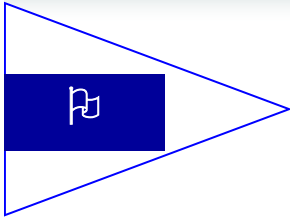
by volunteers—our members. From time to time we've all heard organizers asking for help. We also heard members lamenting that they would have volunteered had they known it was needed. The point to this meeting is to put organizers and volunteers together. Now, to make this meeting work we need input in advance. ***Everyone in the Club responsible for a task or a committee who relies upon volunteers (essentially all of us) needs to get a short description of what they do and the volunteers they need to Judy Quick at [judyq@gwest.net](mailto:judyq@gwest.net) no later than February 13. Judy will produce volunteer information handouts for distribution at the meeting.*** Folks, this is your opportunity to get help and get involved. Let's make the most of it. Get Judy the info!

Lastly, since I'm co-captaining the Ice Breaker Cruise to Edmonds on February 22 through 24 (although this is really a Fleet Captain's corner item), let me say a few words about the cruise (anyway). As we are voyaging to tropical Edmonds, this year's theme is a "Trip to Hawaii." Dig out your Hawaiian shirts and hulas, brush up on your Hawaiian trivia, and come up with a creative Hawaiian dessert (yes, that's right another dessert contest; can anyone beat **Kathy Ornelas**?). Saturday's breakfast will be an authentic Hawaiian morning meal. Aren't ya just curious? There will be an ersatz Luau Saturday evening. And Lance will make his scrumptious French Toast Sunday morning. As of now we have ten boats signed up. We have room for more, and you can drive in as well. As anyone who attended last year's Ice Breaker can tell you, this is a cruise you shouldn't miss (if only to see what craziness we'll come up with this year). If you are interested in going, it's not too late, but it will be soon. Contact me ASAP at [pspina02@aol.com](mailto:pspina02@aol.com) or call me at 206-265-0981.

## New Members

New members inducted in January. You can find their detailed information (addresses, phone numbers, etc) on the PSYC website under "PSYC Member Search...".

- **Lizzie Evans** - Lizzie joined as a social member and made it clear during her induction that she loves the water and riding on boats
- **Kevin and Kim Foley** - As active members and are eager to cruise - on their 49' Defever named Celtic Storm
- **Tim Dies and Brianna Ray** - As active members they are proud owners of a 65' Chris Craft named High Seas currently under restoration
- **Ira Robinson & Katherine Curry** - As active members they enjoy cruising on Riki Tikin, a 27' Regal



## Fleet Captain's Report

Chris Kullmann

Lets dig out those boat, wash them off and get ready to cruise. The Icebreaker Cruise to Edmonds is Feb 22-24. The **Dils** and **Paula & Lance** have many exciting adventures in store for you. Please sign up soon. The next cruise will be Port Orchard March 28-30. This was a well attended cruise last year as there is much to do and see. This is sponsored by the **Josephsons** and **Campbells**.

The April cruise has been changed to a GAFIA to Portland, April 11-13. Contact **Paula**. If you have a desire to help on any cruise or social please contact the people in charge or myself, we can all use a little help from our friends. We will be talking about cruises and socials at the next club meeting, so ask us for information. Good Boating

Dils 206 605 3457  
Paula and Lance 206-545-7271

Chris Kullmann 425-503-3374  
Cindy Josephson 425-827-6628

# Special Recognition

This new section of the Sound Waves newsletter is dedicated to the members of the club who go above and beyond each month to contribute to the success of the club. Thank You!

Please raise your glass in honor of **Judy & Bob Quick**, **Dana Underwood**, and **Veronika Loistl** for their efforts in hosting the January wine social.

For those of you enjoying a long winter's nap, you missed out on the Boat Show Brunch hosted by **Paula Spina & Lance Loomis**, **Lisa & Mike Haistings**, **Kathy & Joe Ornelas**, **Rochelle Gray**, **Jodie Paine**, **Echo Summers**, **Donna & Gary Sheneman**, **Rick & Eileen Edel**, **Sue & Bill Dils**, and **Bob & Judy Quick**. As usual we had a phenomenal breakfast and a wonderful time with our friend with Richland Yacht Club.

Roster Preparations are underway and it's important to recognize the huge effort **Jim and Brian Barrett** are making to ensure our website and roster are the best on the sound. This is in no way a small effort and we owe them our praise for their sacrifice and commitment. I also want to acknowledge **Rochelle Gray** and her team including **Jerry Zitkovich**, **Mike Haistings**, **Bill Allen**, and **Kevin Carlson** for their efforts in selling advertising to offset the cost of publishing the Roster. Their efforts cover a major part of our operating budget and continue to strengthen our relationships in the boating industry.

### 2008 Appointed Positions:

- Boiling Pot—Dan Gray
- Dock Master—Bill Dils
- Finance Committee Chair—Lisa Haistings
- Galley Chairs—Laurence Krueger/Marcia Ellingson
- Historian—Ron Bell/Jack Excell
- Long Range Planning Chair—Larry Newton
- Membership Chair—Judy Quick
- Nominating Chair—Mike Haistings
- Opening Day Chairs—Patrick & Bridgette Baker
- RBAW Representative—Steve Cook
- Reciprocal Chair—Kevin Carlson
- Roster Ad Chair—Rochelle Gray
- Roster Chair—Brian Barrett
- Sergeant at Arms—Dan Gray
- Ship's Store—Colleen Zitkovich/Donna Sheneman
- Sound Waves—Susie Barrett
- Steward—Neil Krueger
- Sunshine Chair—Cindy Josephson
- Thursday Lunch—Marilyn Sullivan/Lorraine Brooks
- Website Managers—Jim Barrett/Brian Barrett



GIVE US YOUR IDEAS! WHAT WOULD YOU LIKE TO SEE IN SHIP STORES?

Following are some possibilities:



- Coats-windbreakers, fleece, vests (lined or fleece), fleece-lined
- Hats-baseball, floppy brim, visors
- Shirts-long-sleeved, polo/golf, t-shirt
- Drink Glasses-wine, tumblers, etched or painted logo
- Linens-kitchen towels, hot pads, throw blankets
- Mugs
- Flags or pennants
- Napkins
- Sweatshirts-hooded, plain
- Any other items?

Please email Colleen or Donna with *colors/sizes if applicable*. *No promise to order is necessary. We will order in March, in time for the cruising season.* [zitkovich@msn.com](mailto:zitkovich@msn.com) or [donnashen@msn.com](mailto:donnashen@msn.com)

## ***New Member Orientation Meeting***

We have announced that the February meeting (2/20) will be a new member orientation and volunteer opportunity.

In preparation for that meeting could each of you determine if you would like volunteers to help you. If you do, would you please do ASAP:

Send me a brief email with:

- Your name, contact information (email and phone)
- What you are in charge of
- What you need volunteers to do
- And provide a very brief explanation of how much time and what is involved in volunteering

I will gather the information and send it out before the meeting to all our members so everyone has a chance to see what we need.

In advance of the meeting I will print copies of this information for distribution at the Feb. meeting.

At the meeting, once we wrap up our other business, I would like each leader (who needs volunteers) to stand up and introduce her/himself and say what help is needed. Then, I will have tabletop signs for each leader saying what help is needed. Our members will then visit those folks and sign up on a volunteer sheet that each leader will have. At the end of this "Fair" we will have Gary or whomever, wrap up by asking each leader to report on what volunteers he/she has and if s/he needs more.

After the meeting, I will send out an email to our members reporting on what we did and where volunteers are still needed and who has volunteered for our various activities.

If you review the email list and see I have overlooked someone, please let me know so I can be sure to add them and send them a copy of this note.

Thank you for your help. Please call if you have any questions.

Judy Cushman Quick, Membership, 425 644 9008 home

### Valentine's Day Trivia

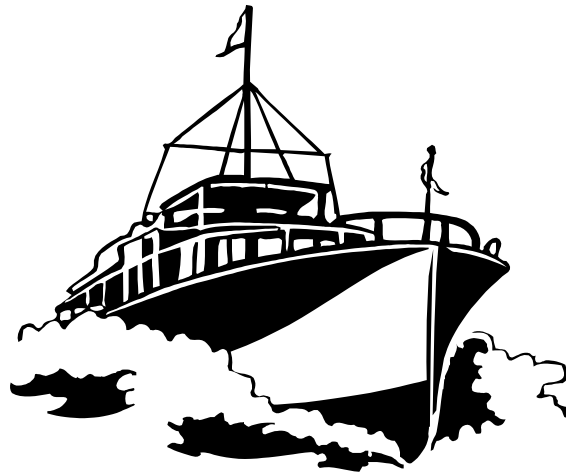
Teachers will receive the most Valentine's Day cards, followed by children, mothers, wives, and then, sweethearts. Children ages 6 to 10 exchange more than 650 million Valentine's cards with teachers, classmates, and family members.

COLD AND RAINY? IT'S NEVER COLD OR RAINY FOR THIS CRUISE. WE PROMISE!

THE FIRST PSYC CRUISE OF THE YEAR

LAST YEAR WE PROMISED YOU BEANS AND COLD FISH FOR BREAKFAST—AND WE DELIVERED!

PSYC  
Ice Breaker Cruise  
February 22-24  
Edmonds, WA



CONTACT

Bill/Susan Dils 206.605.3457

Bdils@pugetsoundyc.org

or

Paula Spina/Lance Loomis

206.265.0981

Crockett.farm@gmail.com

CAUTION: DO NOT WATCH "LOST" BEFORE THIS CRUISE!

# ▶ February 2008

Sun      Mon      Tue      Wed      Thu      Fri      Sat

					1 Birthday – Dana Underwood	2
3	4	5 Birthday – Angie Pihlman	6	7	8	9
10	11	12 Birthday – Chris Thomsen	13 <b>Board Meeting</b>	14 Birthday – Pat Hansen Birthday – Jerry Zitkovich Thursday Lunch Bunch	15	16
17	18	19	20 <b>General Meeting</b>	21	22 Birthday – Dan Gray Ice Breaker Cruise to Edmonds	23 Ice Breaker Cruise to Edmonds
24 Birthday – Norm Grossman Ice Breaker Cruise to Edmonds	25 Birthday – Bess Bell	26	27 Birthday – Juanita Spong	28	29	